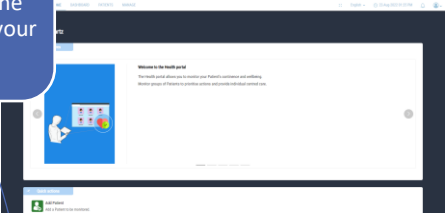
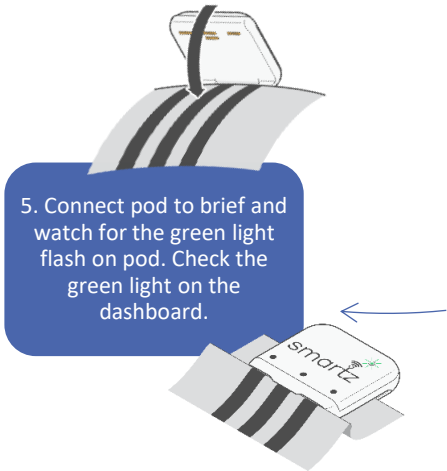
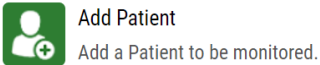


1. Collect the Smartz® pod and Smartz® brief.

2. Create your User account in the Smartz® dashboard following the prompts or log in with your User details.

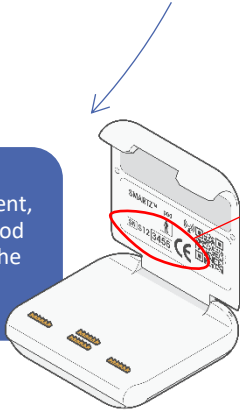


3. Patients can be added to the dashboard by following the prompts.

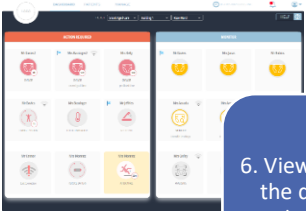


5. Connect pod to brief and watch for the green light flash on pod. Check the green light on the dashboard.

4. To setup your Patient, check the Smartz® pod number shown on the inside of the lid.



7. Review messages via the Smartz® Notification app anywhere with internet coverage.



6. View the icons shown on the dashboard to know what care is required.

Smartz® Quick Start